

CHARGING OF CAST IRON WITH ABRASIVE DURING LAPPING

Adam W. Barylski
Gdansk University of Technology, Gdansk, Poland

1. Introduction

The method of dosaging abrasive slurry or abrasive compound has an essential effect on the efficiency and quality of lapping [4-6]. Besides the unbound method of abrasive charging the lapping tool, where abrasive slurry is delivered as drops or the abrasive compound is laid on the lapping active face during the process, a new surface treatment with lapping tools force charged with abrasives is developed. This technology has found, above all, a use for in very precise lapping. This surface treatment is characterized by a comparatively low efficiency and a small roughness of the lapped surface.

The charging process is usually done manually, with the use of a hardened disk or roller. First of all, after the cleaning of the active lapping face, the abrasive compound (e.g. diamond paste) is spread on it. Next the grains are pressed in manually with the use of a roller. This operation should be done a few times, in different directions, after which the active face should be additionally rolled with a steel disk or a sintered carbide disk. This action takes only over a dozen of seconds. The above allows to even-out the protrusions of the micrograins pressed into the lapping tool face. Directly before using the charged lapping tool it should be shower - washed and dried.

The manual charging can be applied to a single - disk lapper, for which the tool is rotated. The charging time is relatively long. The efficiency and the quality of the charging is not very high, due to the difficulties of the uniformly distribution of the abrasives micrograins (Fig.1). An additional problem is that the compression of the charging elements is not constant, which causes differences in the micrograin penetration of the lapping tool face. From some time, research has been done about machine surface charging. Introducing a mechanical drive should eliminate the fundamental faults of the manual charging.

2. Technique and the kinematic of the forced charging

The device presented on Figure 2 is composed of three arms (1-3) spaced every 120° and fixed to the lapping machines auxiliary table. The diameter of the lapping disk (5) which rotates is 900 mm. The arms (1-3) are spaced between the conditioning rings (4). A conical rubber roller (7) (Fig.3), provided for distributing the abrasive micrograins on the disk surface, is mounted on arm (1). Roller (7) is pressed to the lapping tool by a press bolt (9), and is lifted by springs (9). Strips (11) with conical charging rollers (6) in angle bearings are fixed to the other arms. Arm (11) with charging rollers (6) is lifted by springs (10), whereas the working load is exerted by a pneumatic servo-motor (16). To the arm (2) is fixed a movable strip (12) with a abrasives storage bin (13). The abrasives dosage, through the feeding pipe (14), is regulated by a regulating screw (15). After finishing the abrasive charging, the conical rollers (6) as well as the roller distributing the abrasives (7), cannot be in contact with disk surface (5). Economical dosaging of the abrasives has an essential meaning, especially in the case of super-hard abrasives, which are expensive materials. The use of conical charging rollers eliminates the phenomenon of slipping between the roller and the disk, whereas the pneumatical pressing reduces the uniformity of the micrograin load. The proposed constructional solution gives a base for automation of such a type of lapping technology.

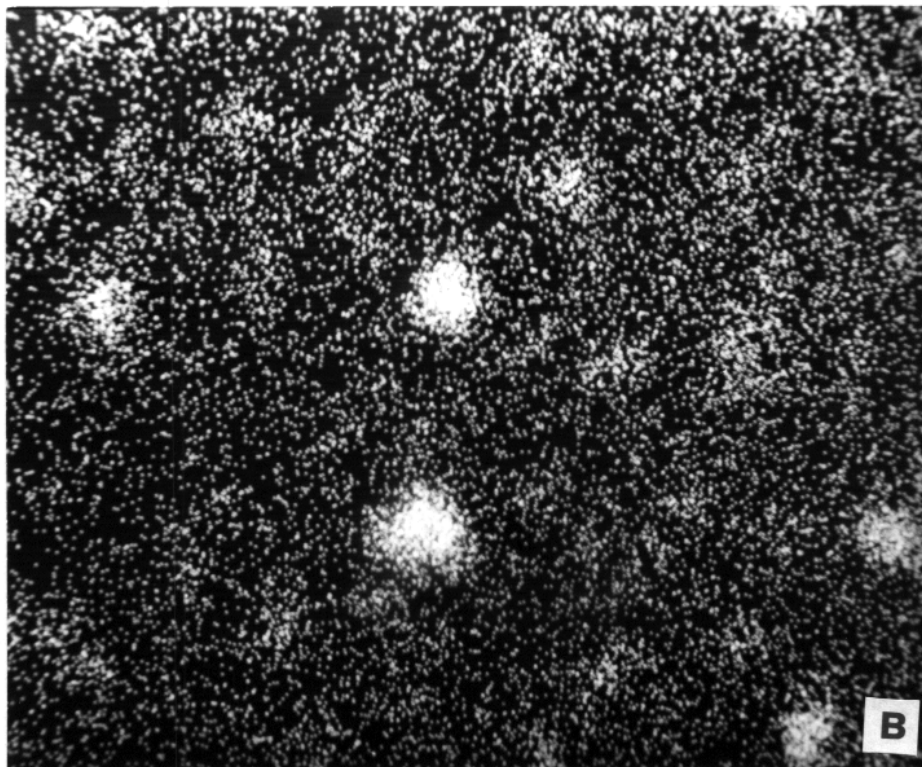
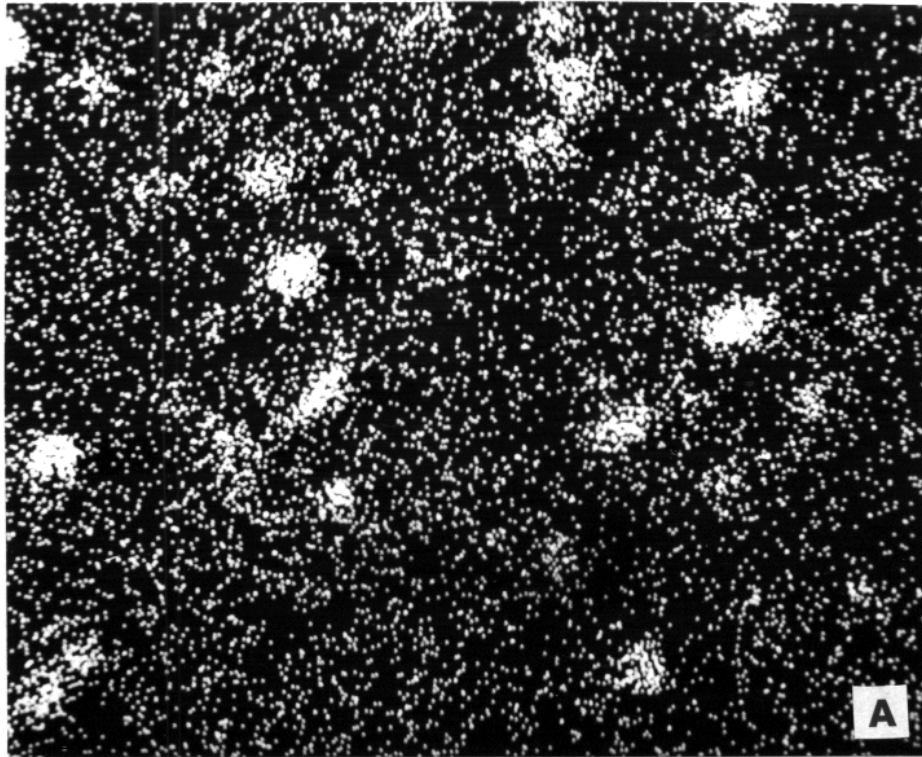


Fig.1. Microphotograph of Z_s50007 cast iron lapping tool: a) analysis I, b) analysis II; approximately 2000x (SiK_α, U=25kV)

2. Research of the forced charging

An evaluation of the charging quality was carried out on a lapping disk, which active area was equal to 84.82 cm^2 . The research variable factors were the unit pressure $p_z = 156.5 - 310.5 \text{ N/m}$, mean velocity $v = 0.036 - 0.068 \text{ m/s}$ and the charging time $t_z = 60 - 240 \text{ s}$. The necessary amount of tests and the range of the tested factors change of value were determined during the preliminary tests. The disk surface was observed on a scanning electron microscope.

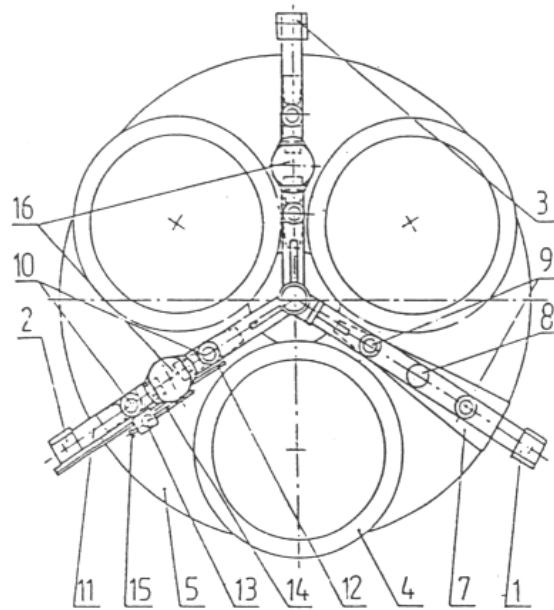


Fig.2. General top view of the productive version of the device for abrasive charging of the lapping tool surface

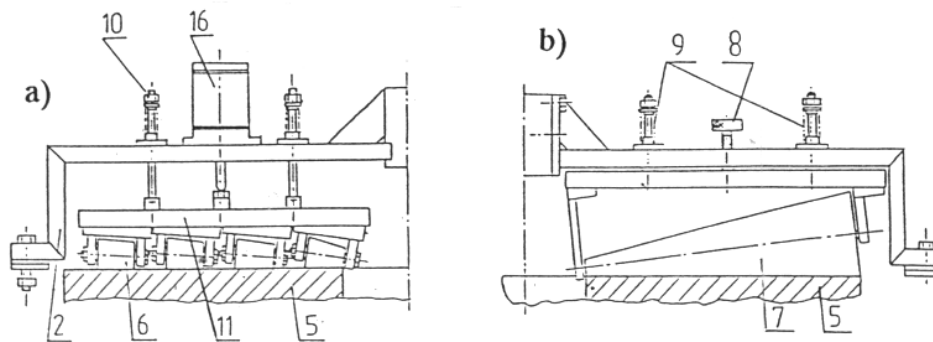


Fig.3. Conical roller assembly for lapping tool charging (a) and the position of the abrasive micrograin distributing rubber roller (b)

The size of the micrograins embedded in the surface of the lapping tool decreased when the roller unit pressure and the charging time increase and so, for the charging of a Z_550007 cast iron lapping tool with silicon carbide micrograins (99C) 320 was received $z = 20 - 26 \mu\text{m}$ ($p_z = 256.5 \text{ N/m}$, $t_z = 180 \text{ s}$, $v = 0.059 \text{ m/s}$), and by using 99C of a number 800 the following was observed $z = 2 - 6 \mu\text{m}$ ($p_z = 256.5 \text{ N/m}$, $t_z = 300 \text{ s}$, $v = 0.059 \text{ m/s}$).

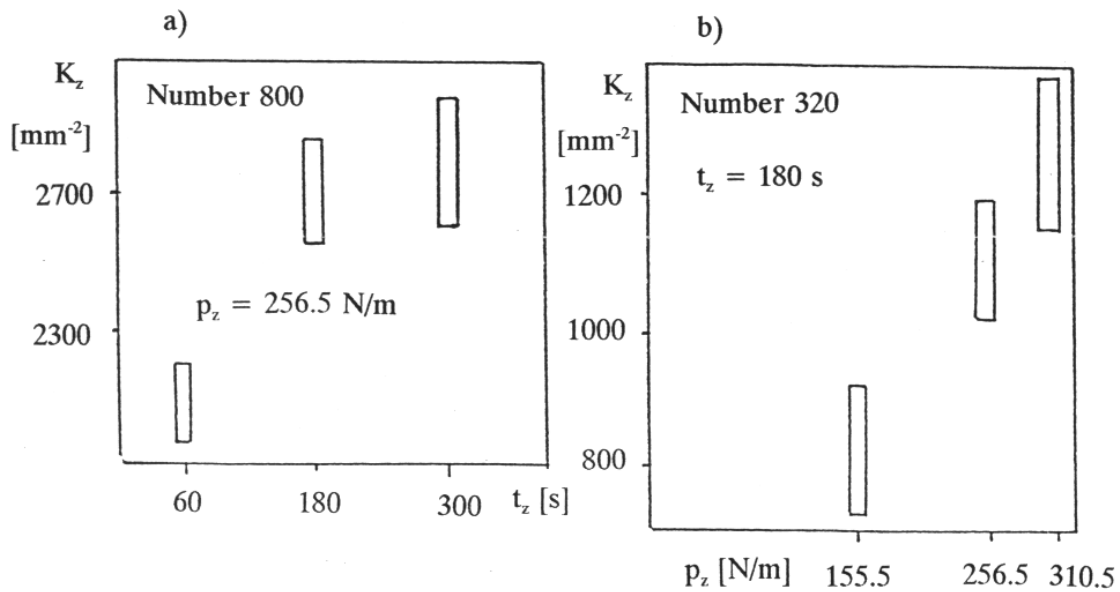


Fig.4. Concentration K_z of the micrograins which have penetrated into the Z_s50007 cast iron tool surface: a) the influence of the charging time t_z , b) the influence of charging force p_z

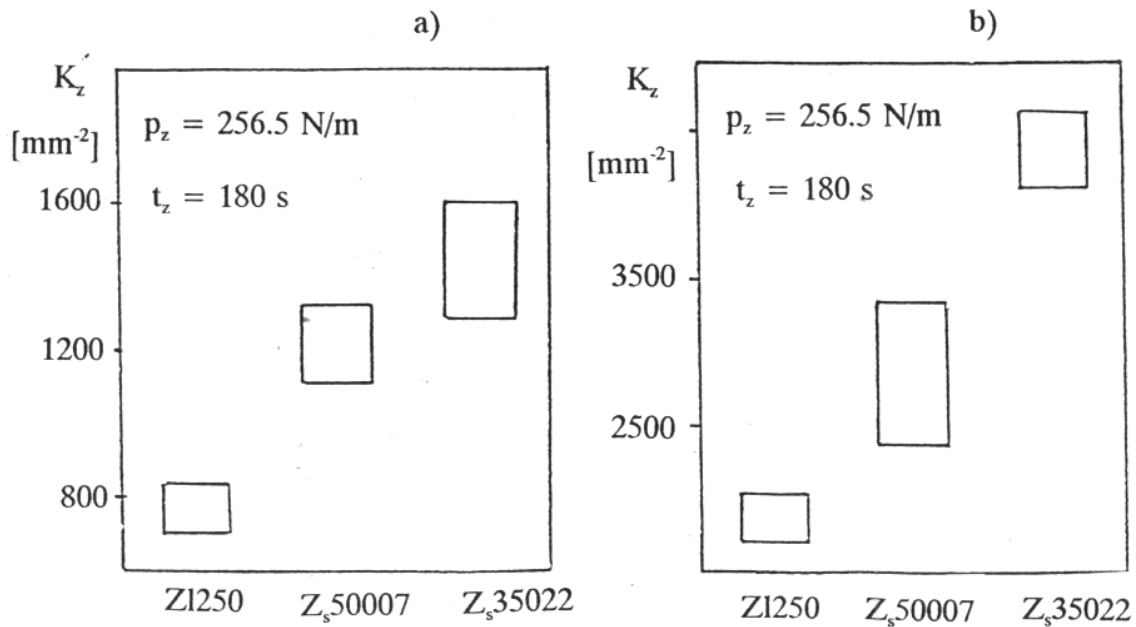


Fig.5. Intensity of cast iron lapping tool charging with micrograins of number: a) 320, b) 800

Figure 4 presents the influence of the pressure and the charging time on the amount of micrograins embedded in the surface of the Z_s50007 cast iron lapping tool, and on Figure 5 the influence of the micrograin number on the intensity of the abrasive charging of grey cast iron. The highest intensity

was received for the Z_s35022 cast iron. The concentration of micrograins increased together with the increase of the charging time from t_z=180 to 300 s caused a minimum increase.

4. Conclusions

The carried out research shows [1-3] that in the case of large differences between the abradent grain size and the size of the cast iron graphite intrusions, there can be a simultaneous penetration of a few micrograins into the graphite. Other than charging the graphite there is also an intensive penetration into the cast iron metallic matrix, into the ferrite as well as the pearlite. A relatively high intensity of penetration of larger sized micrograins on the borders of graphite intrusions and in the ferrite halo were observed. An experiment was carried out to determine the empirical probability of the 800 micrograin (silicon carbide: expected value E(Z) = 6.81 μm, standard deviation D(Z) = 4.08 μm) penetration into the Z_s55003 cast iron graphite intrusions. The n_g X-ray patterns were analyzed, concerning the silicon lay-out, FeK_α and SiK_α, on the cast iron surface after t = 135 s (conditions for unbounded abradent charging: p = 0.19 MPa, v = 0.40 m/s). The experimental sample size n_g was specified on the basis of the preliminary test. According to research results, the empirical probability of the abradent penetration into the graphite amounts to P = 0.0814. Because the amount of graphite sections on one unit area amounts to N_A = 98 mm⁻², therefore we can assume that on the area of 1 mm² there shall be 8 graphite intrusions penetrated by abrasive grains.

5. References

1. Barylski A.: Contamination of graphite with abrasive during lapping of cast iron. Stud. i Mater. Gorz. Osr. Bad. i Ekspertyz Nauk., 1985, Ref. T.IV, 1-2, 303-316 (Polish).
2. Barylski A.: Fundamentals of flat surface lapping with single-disk. Zesz. Nauk. P.Gdan., 1992, 491, 3-196 (Polish).
3. Barylski A.: Surface contamination of cast iron after lapping. Lubrication Engineering. 1996, 1, 63-67.
4. Barylski A.: Theoretical and experimental fundamentals of flat surface lapping on disk lapping machine. Proceedings of the 7th International Precision Engineering Seminar, Kobe, 1993, Suppl., 1-15.
5. Jascericyn P.I., Zajcev A.G., Barbotko A.I.: Tonkije dovodocnyje processy obrabotki detalej masin i proborov. Minsk, Nauka i Technika, 1976.
6. Ulegin V.G., Ogorodnikov A.P.: Fiziceskaja suscnost sarzirovanija. Almaz, 1973, 12, 10-16.